

## PERFORMANCE EVALUATION OF THE BIO FUELS DERIVED FROM WASTE COOKED OIL

Pooja 1, a \* Balaji Rao K 2, b Kalyana Kumar MP 3, c Madhu B P 4, d

<sup>1</sup>Student, Department of Mechanical Engg, Dr.TTIT, KGF,Kolar, India

<sup>2</sup> Assistant Professor, Department of Mechanical Engineering, Dr.TTIT, KGF-Kolar

<sup>3,4</sup>Assistant Professor, School of Mechanical Engineering, REVA UNIVERSITY, Bengaluru

Corresponding author E-mail: kalyanakumarm@reva.edu.in

---

### Abstract

*Almost all countries are dependent on petroleum fuel to fulfill their energy requirements. Increase in energy demand due to growth in population has affected the underground fossil fuel resources. In order to counter this problem, researchers are looking for alternative sources of energy. Biodiesel is one of the potential alternatives to petroleum diesel, as its properties are very comparable to diesel. Moreover, biodiesel is mainly derived from renewable feeds stocks like edible, non-edible oils or animal fats. In recent decade, the main focus is to prepare biodiesel from edible oils like cottonseed oil, sunflower oil, coconut oil. Producing biodiesel from edible oils may leave negative effect on agriculture in terms of scarcity of food crops so non-edible oils are preferred for production of biodiesel. The main advantages of using biodiesel are its portability, being readily available, better combustion efficiency, lower sulphur content, higher cetane number, higher bio degradability, domestic origin, higher flash point and improved lubrication property. Researchers have found that with use of biodiesel nitrogen oxides (NOX) emission increases whereas hydrocarbon (HC), carbon monoxide (CO), and particulate matter emissions (PM) decrease in comparison to diesel fuel. The present paper, therefore, focuses on the emissions from biodiesel fuelled diesel engine operation.*

Keywords: Bio-diesel, HC, CO, NOx, PM.

---

### 1. INTRODUCTION

The Indian economy depends on transportation, and transportation depends almost entirely on oil. This dependence on oil as the nation's only significant transportation fuel creates risk of economic shock. The increased production and use of biofuels could significantly reduce the amount of oil needed to fuel Indian cars and trucks. Creating an abundant supply of biofuels and the accompanying national production and distribution network — would ensure a more prosperous and secure future for India.

The principal objections about biofuels concern the effects of production at very large scale. Like anything else such a task can be managed badly, and it is important to understand the potential impacts of poor decisions and the benefits of good ones.



Figure 1.1: Sunflower seeds and used oil

## 2. OBJECTIVE

- Production of Bio-diesel using transesterification process.
- To study the Performance characteristics of waste cooking oil.

## 3. METHODOLOGY

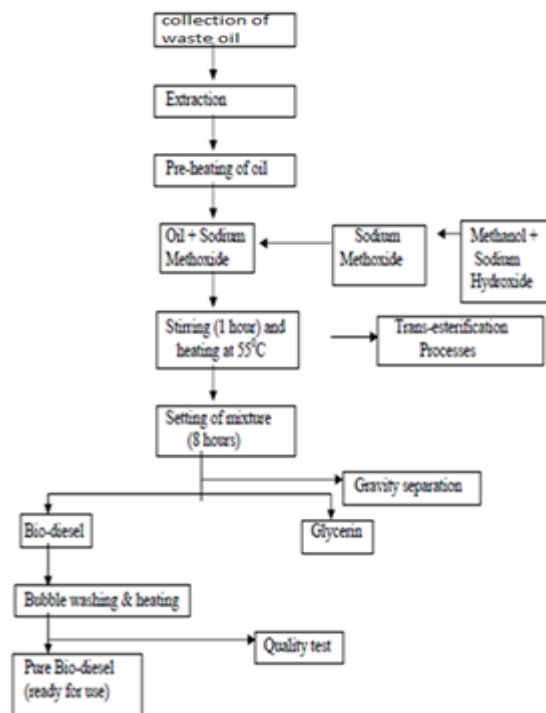


Figure 1.2: Biodiesel production for Waste cooking oil



Figure 1.3: Transesterification unit

Table1.1 Biodiesel Properties of Waste Cooking Oil

PROPERTY	DIESEL	Waste Cooking Oil
FLASH POINT	65°C	165°C
FIRE POINT	78°C	170°C
VISCOSITY	2.86 poise	4.82 poise
S.G	0.827	0.877
CV	44030 kJ/kg K	40873 kJ/kg K

#### 4. EXPERIMENTATION



Figure 1.4: Four Stroke Diesel Engine

Brake Horse Power : 6 BHP

Orifice diameter : 0.025m

RPM: 1500rpm

Fuel: Diesel oil  
 Cylinder: multi  
 Bore diameter : 85mm  
 Stroke length : 80mm  
 Working cylinder : 4 stroke  
 Compression ratio : 18:1  
 Starting : Centrifugal Governor  
 Dynamometer : Mechanical/Rope  
 Cooling : water cooled

**5. RESULT AND DISCUSSION**

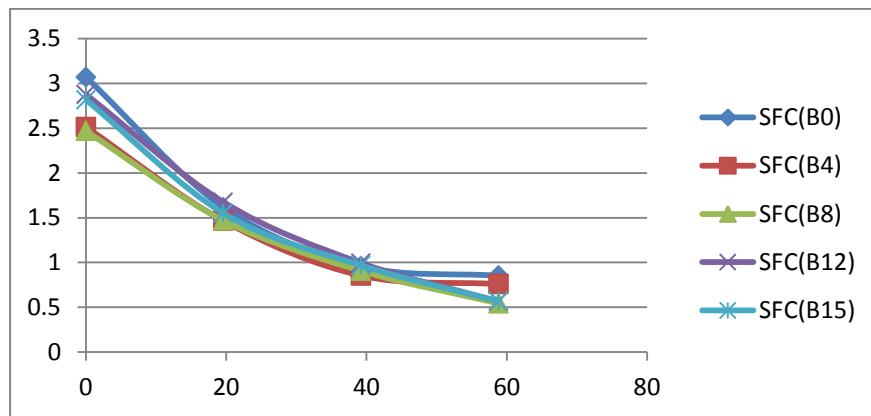


Figure 1.5: SFC Vs Load

Figure 1.5 shows SFC V/S Load. In the above figure shows that specific fuel consumption in the blend decrease with increase in load when compare to all blends. Because of load carrying capacity of the engine is maximum in blend zero. Even the fluctuation of the load leads to decrease the specific fuel consumption, constant injection pressure.

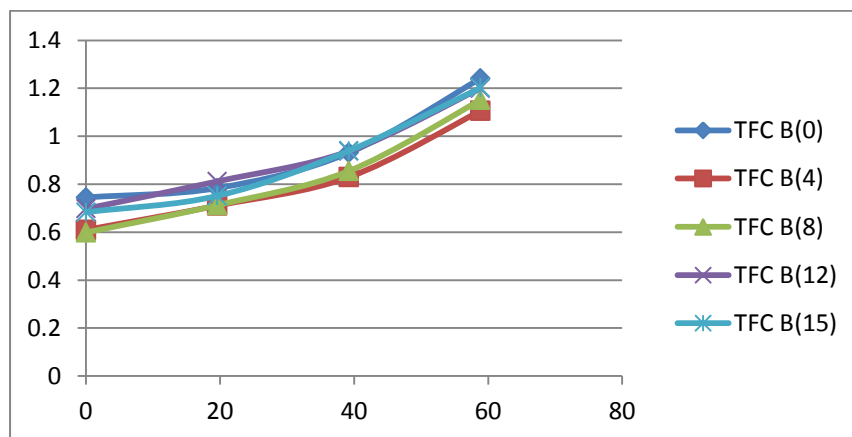


Figure 1.6: TFC Vs Load

Figure 1.6 shows TFC V/S Load. In the above figure shows that Total fuel consumption in the blend increases with increase for all the loads. Total fuel consumption is depends on as many parameter that is leads to increase total fuel consumption with the load. Due to blends ratio are small TFC increases continuously with load for all blends.

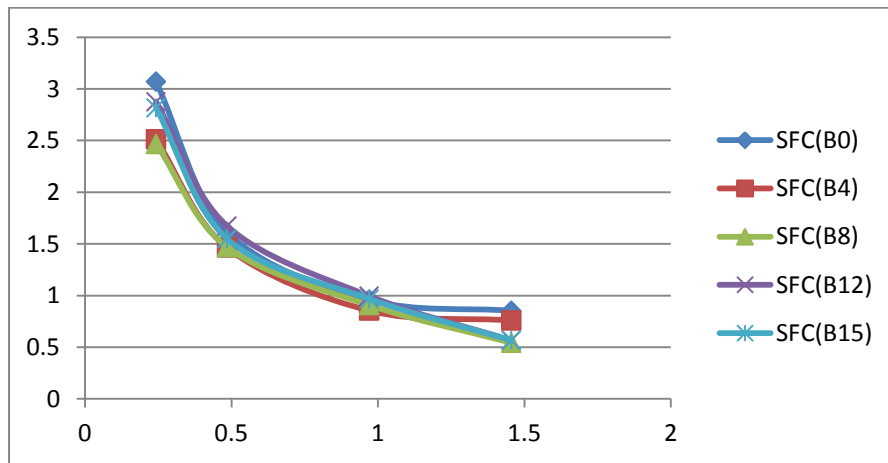


Figure 1.7: SFC vs BP

Figure 1.7 shows SFC V/S BP. In the above figure shows that specific fuel consumption in the blend decreases with increase of brake power for all blends. Specific fuel consumption is depends on as many parameter that is leads to increase specific fuel consumption with the brake power. Due to blends ratio are small SFC decreases continuously with load for all blends.

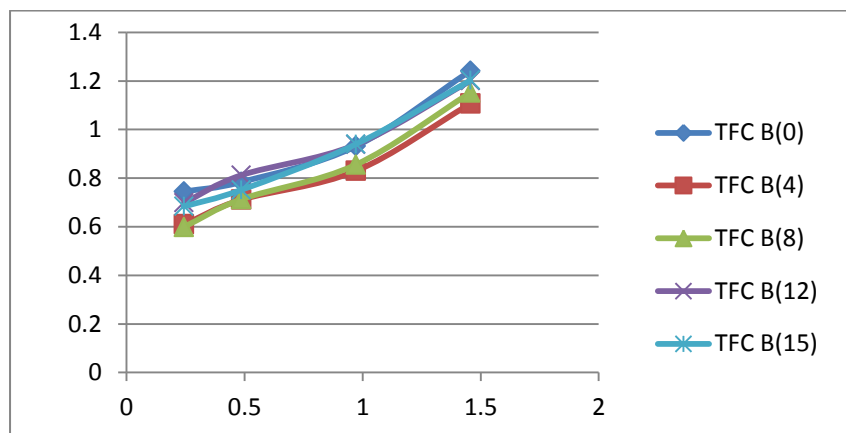


Figure 1.8: TFC Vs BP

Figure 1.8 shows TFC V/S BP. In the above figure shows that Total fuel consumption in the blend increases with increase of brake power for all blends. Total fuel consumption is depends on inlet pressure and temperature, intake manifold diameter , exhaust temperature and so on that are leads to increase Total fuel consumption with the brake power. Due to blends ratio are small TFC decreases continuously with load for all blends.

## 6. CONCLUSION

Biodiesel is an effective fuel for conventional diesel and can be fuel in an engine without any modifications to

the engine

It has many positives like high biodegradability, reduction in greenhouse gas emission, non- sulfur emissions, non-particulate matter pollutants, low toxicity, excellent lubricity and is obtained from renewable source like vegetable oil, animal fat etc. Waste cooking oil is cost effective and promising feedstock.

## REFERENCE

1. A.K. Pandey & M.R. Nandgaonkar, Experimental Investigation of the Effect of Esterified Karanja Oil Biodiesel on Performance, Emission and Engine Wear of a Military 160hp Turbocharged CIDI Engine, Proceedings of the World Congress on Engineering, Vol. 3, London, UK, 2011.
2. Ashish J., Kalyan M., M. Jagadish, M. Merawade & M.C.Navindgi, Performanc and Emission Characteristics of Mahua and Linseed Biodiesel Operated at Varying Injection Pressures on CI Engine, International Journal of Modern Engineering Research, Vol. 2, Issue 3 (2012) pp. 1142-1149.
3. M.N.Channappagoudra, S. Thaned, N.R. Banapurmath, K. Ramesh & G.Manavendra, Effect of swirl on DI diesel engine operated with Honge Biodiesel, Int. Journal of Engineering Research and Applications, Vol. 3, Issue 6 (2013) pp. 595-601.
4. Mr. Kanji D.D. & Prof. G.P. Rathod, Review on Performance and Emission characteristics of diesel engine fuel blended with linseed oil and diesel, International Journal of Advanced Engineering Research and Studies, Vol. 02, Issue 02 (2013) pp.0507.
5. S.Prabhakar, KAnnamar & I.J.R Lavani, Experimental study of using hybrid veritable oil blends in diesel in diesel engine, Journal of science & Industrial research, Vol. 71 (2012) pp. 612-615.
6. A. Chandrashekar, N.S. Mahesh, B. Gowda & W. Hall, Life cycle assessment of biodiesel production from Pongamia oil in rural Karnataka, CIGR Journal, Vol.14, No.3 (2012) pp. 67-77.
7. V.S. Yaliwal, S.R. Daboji, N.R. Banapurmath & P.G.Tewari, Production and Utilization of Renewable Liquid Fuel in a Single Cylinder Four Stroke Direct Injection Compression Ignition Engine, International Journal of Engineering Science and Technology, Vol.2(10) (2010) pp. 5938-5948.
8. R.S. Kumar, R. Manimaran & V. Gopalakrishnan, Performance and Emission Analysis Using Pongamia Oil Biodiesel Fuel with an Artificial Neural Network, Advanced Engineering and Applied Sciences: An International Journal, 3(1) (2013) pp. 17-20.